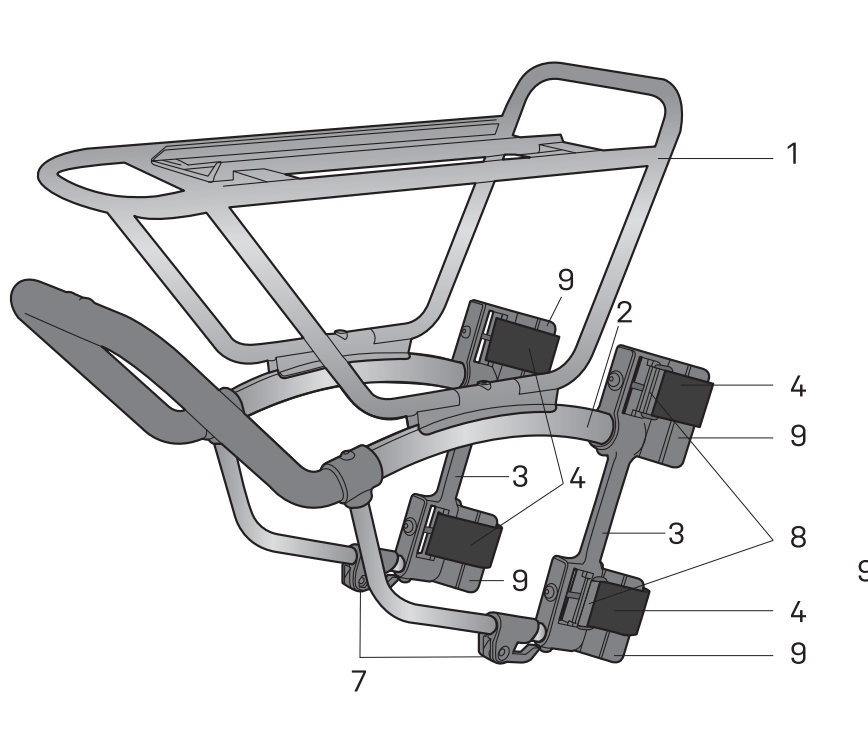
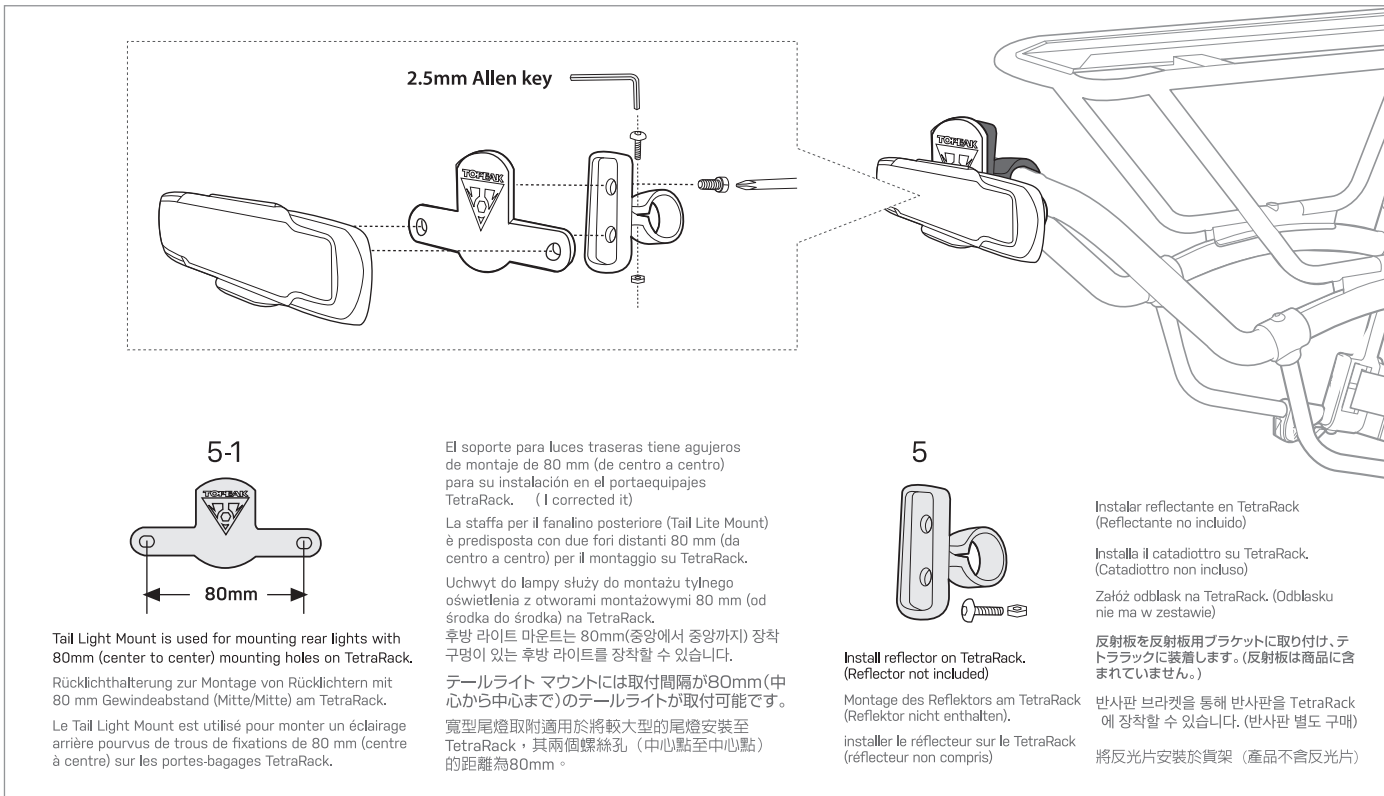
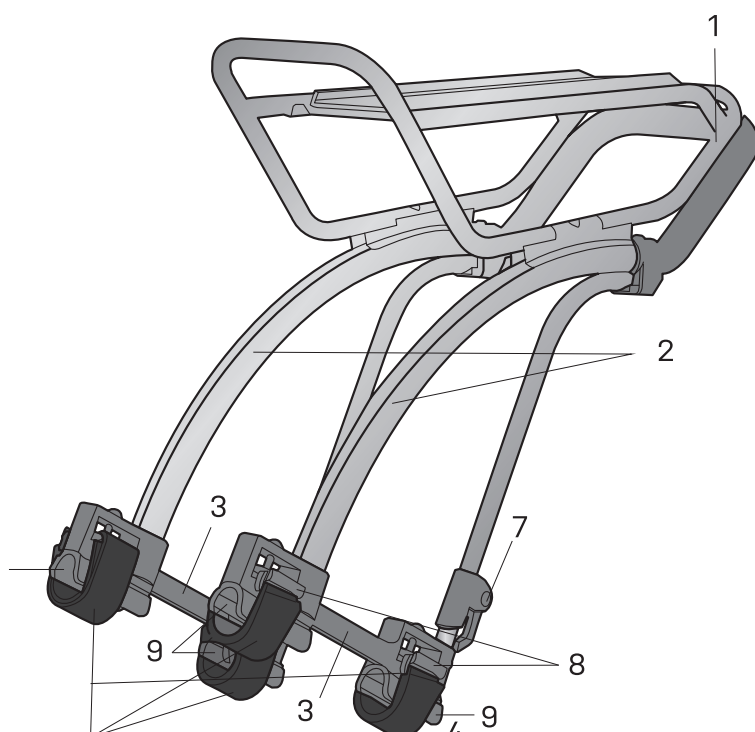


TETRARACK M1 (FRONT FORK)



TETRARACK M2 (SEATSTAYS)



Parts list table for Tetrarack M1 and M2 in multiple languages: English, German, French, Italian, Spanish, Polish, Czech, Russian, Chinese, Japanese, Korean, and Thai.

Technical specifications table for Tetrarack M1/M2, including weight capacity, dimensions, and compatibility information in multiple languages.

WARNING / WARNUNG / AVERTISSEMENT / ADVERTENCIA / ATTENZIONE / UWAGA / 注意 / 경고 / 注意

Warning section with diagrams showing correct and incorrect seatstay angles and mounting methods. Includes text in multiple languages regarding 30-degree angles and frame compatibility.

INSTALLATION / MONTAGE / INSTALACIÓN / MONTAJ / 取付方法 / 장착 / 安裝

Detailed installation steps 1-9 with diagrams and multilingual instructions for mounting the Tetrarack M1 and M2 to the bike frame.



